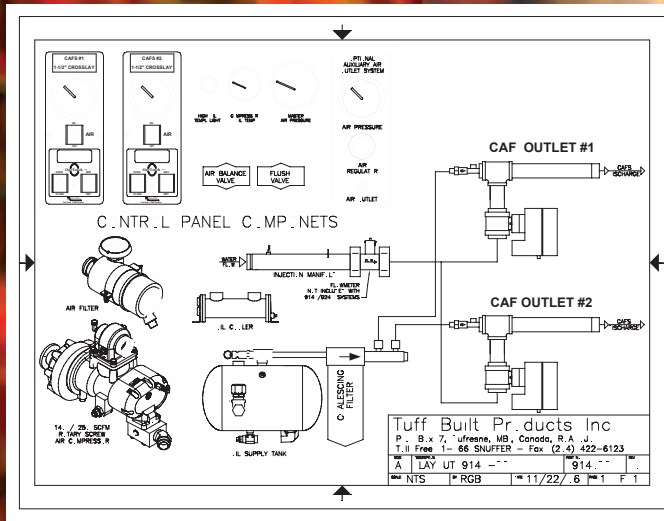


Upgrade Units Model: 0000-140 & 0000-200

We Make the World's Best Foam!



Add on C.A.F.S.; (requires existing water pump)
Snuffer 140SCFM Dual Line C.A.F.S., PTO driven; Manual Foam controls; does not include foam chemical injector; 2x1½" C.A.F. outlets.
PART # 800060 PRICE: _____

Add on C.A.F.S.; (requires existing water pump)
Snuffer 140SCFM Dual Line C.A.F.S., PTO driven; Manual Foam controls; computerized foam injection system 0.2-1.0% Class A foam only; 2x1½" C.A.F. outlets.
PART # 800061 PRICE: _____

Add on C.A.F.S.; (requires existing water pump) **Snuffer 200 SCFM Dual Line C.A.F.S.,** PTO driven; Manual Foam controls; does not include foam chemical injector; 2x1½" C.A.F. outlets. **PART # 800062 PRICE: _____**

Add on C.A.F.S.; (requires existing water pump) **Snuffer 200 SCFM Dual Line C.A.F.S.,** PTO driven; Manual Foam controls; computerized foam injection system 0.2-1.0% Class A foam only; 2x1½" C.A.F. outlets. **PART # 800063 PRICE: _____**

Model 0000-140 & 0000-200 units are add on units to first line pumpers, first line response unit, urban interface & rural application. These trucks will already have a water pump.



WHEN ADDING CLASS A/B FOAM OPTIONS

PART #	OPTION	PRICE
850662	Upgrade Digital Foam Injector to 0.02-3.0%, 2.5 gpm capacity	_____
	OR	
850663	Upgrade Digital Foam Injector to 0.02-3.0%, 5 gpm capacity	_____
850664	Add One Foam Level Gauge	_____
850665	Add One A/B Foam Selector Assembly (Requires 850663 or 850664)	_____
850666	Add One Monitor Pre-Connect Plumbing	_____

PART #	OPTION	PRICE
850667	Add One Auxiliary Air Outlet (to power air tools)	_____
850668	Add One Reel Pre-Connect	_____
850669	Add One Power-Fill Foam Refill System	_____
850670	Replace Manual Foam Controls with OneTouch for 1½" line	_____
850671	Add One 2½" Manual C.A.F. Outlet	_____
850672	Add One 2½" OneTouch C.A.F. Outlet	_____

Prices are subject to change without notice. Product may vary from that shown due to ongoing product improvements.

See next page for specifications.